



Energy for
generations



Tionscadal Éireann
Project Ireland
2040

ESBN PR6 (2026 – 2030) Distribution Work Programme OPR Webinar Introduction Sean Mulvey (Engineering and Major Projects)



- **ESB Networks is the Distribution System Operator**
- **All Transmission, Distribution, Medium Voltage and Low Voltage assets are owned by ESN**
- **ESBN is responsible for the maintenance of assets on the system**



ESB Networks is Responsible for the construction of all new assets (Under ground Cables)



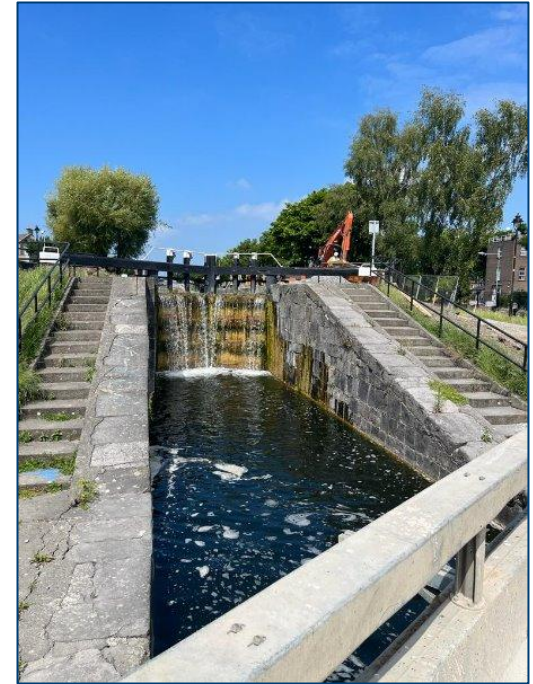
Dodder Road During Construction



Dodder Road After Construction



Whitworth Road



Royal Canal

ESB Networks Responsible for the construction of all new assets (Transmission Substations)



Killonan During Construction



Killonan After Construction

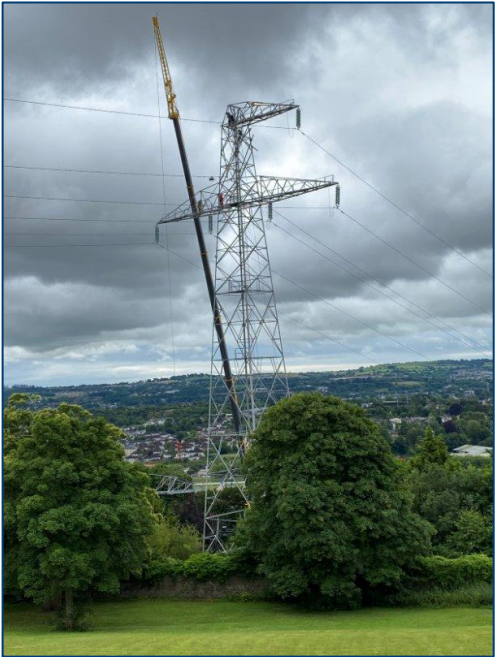
ESB Networks Responsible for the construction of all new assets (Overhead Line Maintenance)



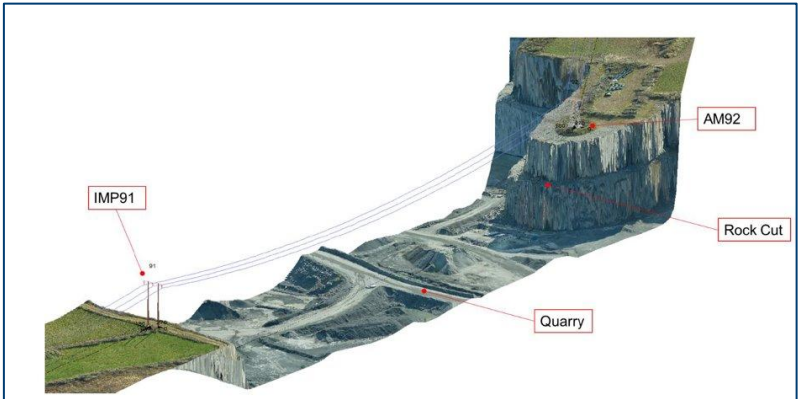
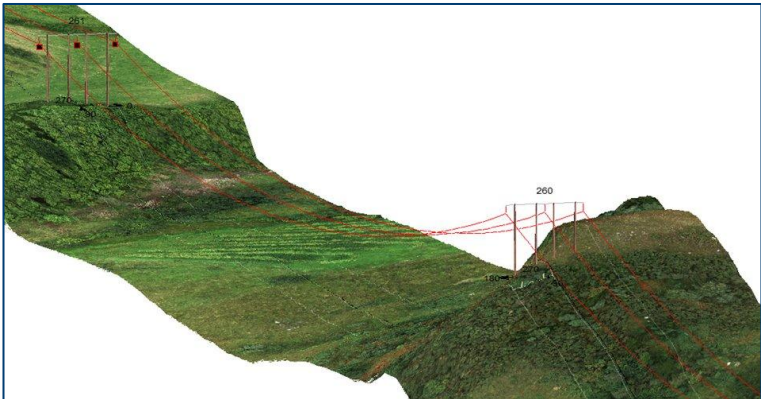
Kilbarry During Construction



Kilbarry During Construction



Kilbarry During Construction



ESB Networks Distribution Programme

- Very strong commitment from ESB Networks to play a leading role in delivering National Development Plan and the Climate Action Plan 25 targets

80 % RES by 2030

9 GW Onshore Wind

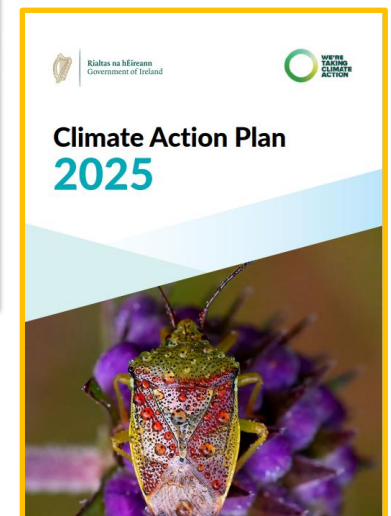
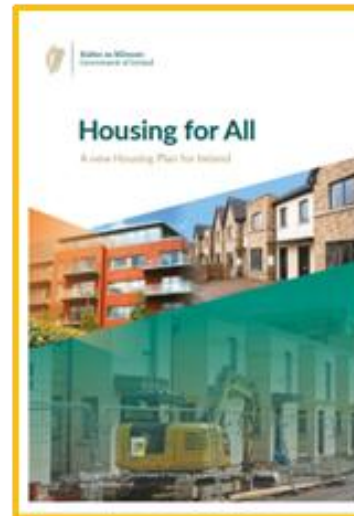
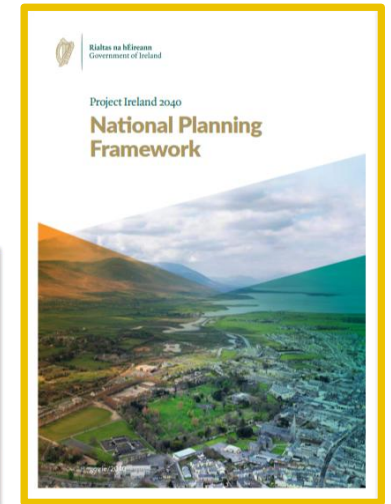
8 GW Solar

- Carbon Budgets- 3 budgets spanning 2021-2035 – Introduced Sectoral Emissions ceilings

2021-2025 - 40 MtCO₂eq

2026-2030 - 20 MtCO₂eq

- National Climate Objective- 51 % reduction in Greenhouse gas emission by 2030 relative to 2018 levels
- **Forecast 50 % growth in electricity demand by 2030**
- **Industry growth, electrification of heat and transport,**
- **Housing For All - over 300,000 new homes**
- Energy Security In Ireland to 2030
- Ensure a fit for purpose electricity grid that supports Ireland's energy and climate ambition
- [Minister O'Brien welcomes historic €18.9 billion investment in energy infrastructure \(ESBN and EirGrid\)](#)



Current State of the Dublin Network

- The Dublin Network is constrained, and Dublin Central is one of the worst affected areas:
 - Years of XLEU (Extra Large Energy User) growth
 - For scale one XLEU can be the equivalent of an entire city (e.g. Galway/Limerick) on the electricity system, there are multiples of these in the North County Dublin

The Challenge Ahead

- The challenge ahead for my team is a combination of:
 - Electrification of Heat and Transport (People will be more reliant on a secure connection)
 - Housing growth (Housing crisis so we need to be able to connect these quickly)
 - Large Customers (Good for jobs and the economy-also looking to electrify their processes)
- The challenge ahead is not unique to Dublin or even Ireland
 - Ofgem in the UK are expecting a 5 fold increase in spend on the electrical infrastructure
- The change required is unprecedented in recent times, rural electrification is the only comparable event in recent history.

How the county council can help enable ESBN



To enable housing, electrification, new customers etc. we need to move quicker, we need to have infrastructure in place ahead of these

- **Our biggest challenges to building the infrastructure quicker:**
 - **Sites and Planning Permission- Long lead time to find a suitable site and to get planning permission on the site**
 - **Need public acceptance of the Infrastructure**
 - **Upfront investment is needed ahead of time to facilitate quicker connections and more reliable connections**
 - **Improved communication and collaboration: with other utilities, county councils, government bodies as road space for example is limited and the recession/post-recession approach will no longer work**

Challenge the County Council may be able to help with:

- **The challenge ahead for my team is a combination of:**
 - **Sites (40 - 50 sites required across Dublin)**
 - **Planning Permission, timelines involved can be slow**
 - **Advanced Notice: Large developments have been coming in with planning permission and no site allowed for a HV station (Belmayne, Grangegorman)**
 - **Cable routes/advanced ducting: Getting all our future needs captured while a road is open**

Thank You