



Mayo County Council
Simon Wall
Senior Architect



Architects Department
Castlebar, Co. Mayo.

Westport Town Arch

A town is a holistic entity
with many interconnected elements, including housing

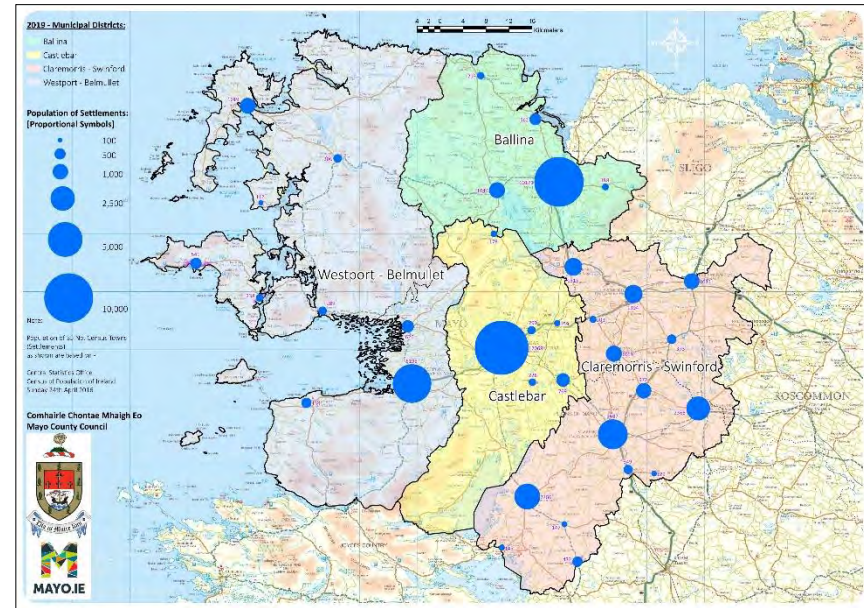
- Commerce – Shops, Employment, Cafes, Restaurants, Accommodation.
 - Entertainment & social – Theatre, Cinema.
- Public realm – Squares, Parks, Social Interaction.
 - Education – Schools, Libraries.

The Westport Story – A holistic approach to the regeneration of a rural Irish Town

Genesis - The Georgians were the Great Irish Urbanists.

The most expansive programme of urbanisation on this island was realised under the stewardship of the Irish Georgians. Who in tandem with elegant estate houses settled an urban network of towns and villages across a rural landscape, changing and influencing a social and economic way of life to our Island.

These towns were designed and constructed with great uniformity with an almost constant architectural palette around fine public gathering spaces which still benefit and influence Irish Society to the present day.



The network of towns that the Georgians both created and remodelled were about a day apart for convenient trade.

You were never more than $\frac{1}{2}$ days walk from a town so as you could shop and return home in a day.



Urban & Economic Stability

The stability of these towns and their strong societal, economic and architectural framework ensured their ability to endure as vibrant economic and social entities. For over 150 years regardless of strong political change, even including the birth of a nation.

The Irish Town - 150 years of

- **Structured Social Order**
- **An Intergenerational Stability**

The Trades
The Professions
The Merchant Princes

The Political dynasties
Family affiliations
Educational associations

Every family lived above their shop
Every street had its own bonfire on St. Johns Night.

The towns main square with its bustling life and commerce and was a open living theatre of life.

If a town was a house,
its main square was its living room!



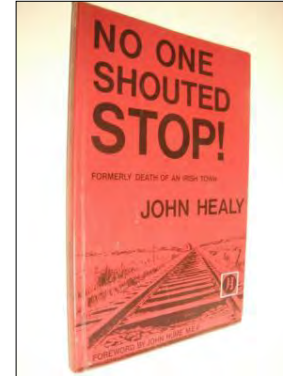
The birth of a nation & civil war

20th Century - How do you mend a broken town?

The Demise of the Rural Irish Town is complex, it was triggered in the mid part of the 20th century by many things including:



IT'S A SAD, GREY morning in Youghal. As you walk along the town's main street you pass Merricks department store, once the oldest in Ireland, which is lying empty after the last retailer moved out of the store's former building a few months ago.- Irish Times 1.04.11



John Healy

1: Economics & Emigration



2: Choice
Motor Car

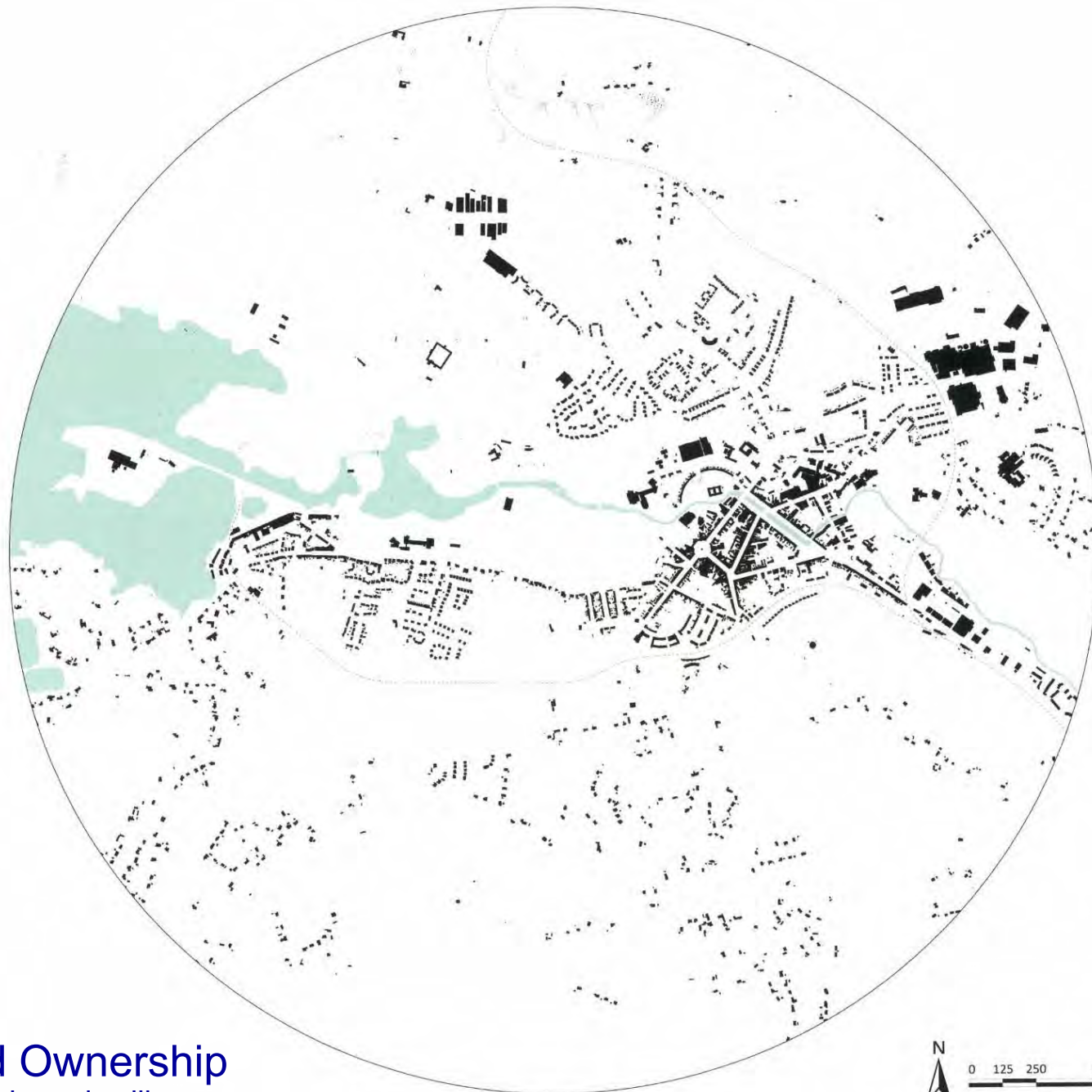
**YOU CAN'T AFFORD
NOT TO BUY THE
ESB
family fridge**

THE SIZE IS RIGHT. The ESB 4.4 Family fridge is big enough to serve a family of six. There's no better choice for a growing family.

THE PRICE IS RIGHT. It's going at the amazingly low price of 39 gns. That's a big-sized fridge at a small-fridge price.

THE TIME IS RIGHT. Buy now while the ESB Family fridge is on the market. If you put off buying for a time, you may be too late.

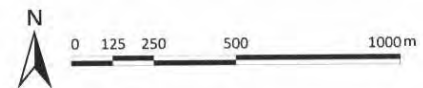
3: Refrigeration
Long term Food Storage



4: Land Ownership

Stand alone dwelling

2019



Simon Wall Town Architect to Westport

Responsibility for the built environment of Westport as part of Westport Town Councils Management Team for 2 decades



- Westport
- A small town
- On a small Island
- Off a larger Island
- Off an ever-expanding Europe
- ‘Running to stand still !’ - Bono

Just to survive as a viable town on the Atlantic west coast is a challenge! To thrive requires strong local leadership immense amount of cooperation and coordinated team work.

Local authority – Voluntary Groups
Chamber – Hotels – Businesses
Town Team



Westport House = €50.7 M Tourism Revenue
To County Mayo per Annum



Westport is a planned Georgian town dating back to 1750
Founded by the Altamont family of Westport House.
House - Castles Wyatt and Ivory

Westport's Economy – Dual Drivers 2 x T's



12 Hotels Premier national tourism destination

Tourism

+



Inc. 250 highly experienced
Science Graduates



Allergan

850 Employees
Inc. 250 Science Graduates
800 M units per annum
Ass. Gammaster + 30 Emp.

Medical Technology (since 1979)



Responsibility for the built environment of Westport as part of Westport Town Councils Management Team for the past 2 decades

THE IRISH TIMES

Voted Irelands Favourite
Piece of Architecture 2016

Royal Institute of Architects of Ireland



Westport is one of Irelands most successful multi award winning towns.
3 - National Tidy Towns wins in one decade – Culminating Irish Times Award
This was not always the case, over the past 2 decades it has extensively reinvented and rejuvenated itself as a strong economic base and tourism destination.



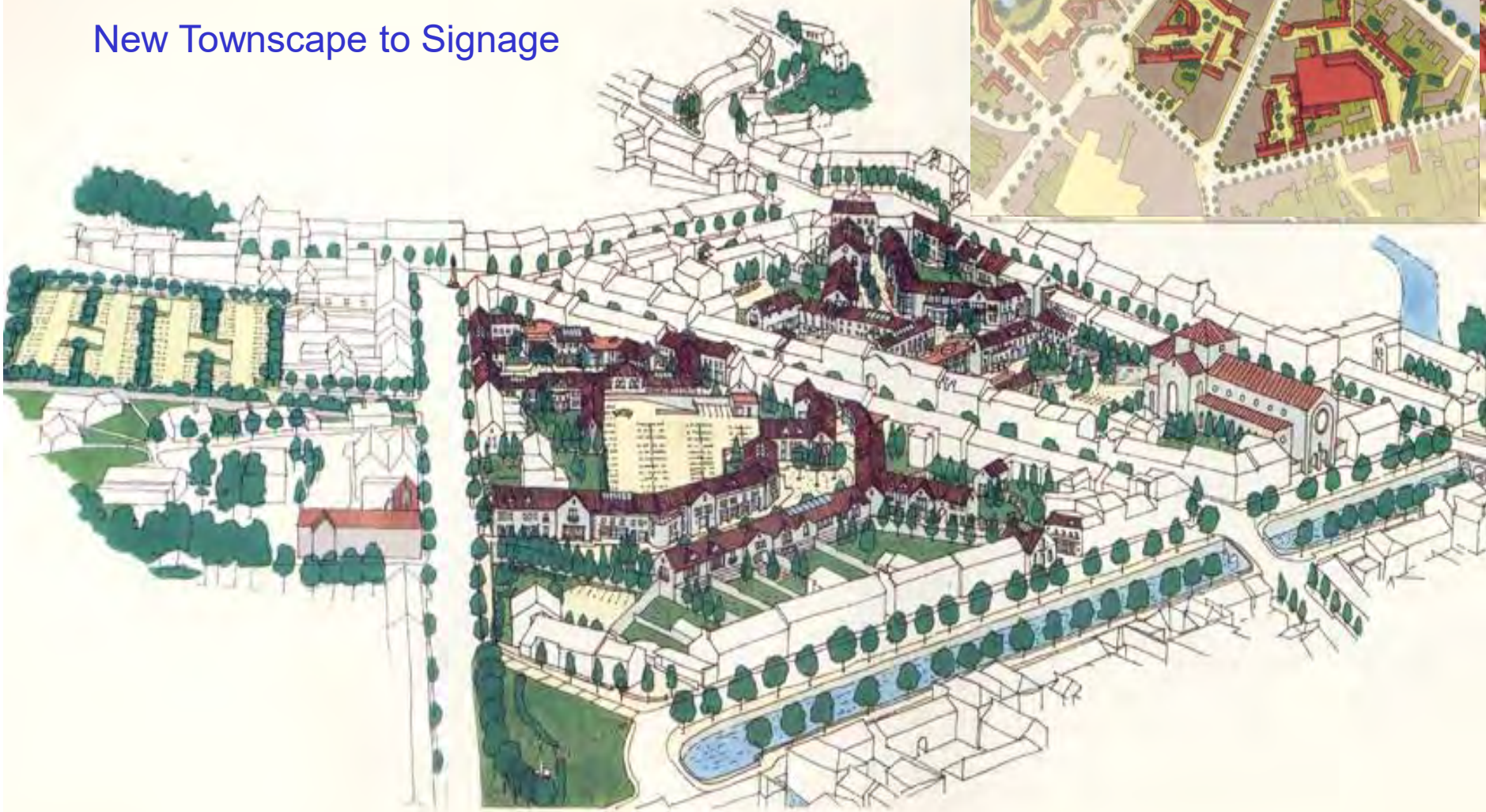


Westport was not always successful.... 1980's!

Marking the Millennium Westport 2000

Town Design Statement large to small:

New Townscape to Signage



Solutions to Problems: Town Design Statement



Starting Small!

Signage Policy
Before





Signage Today

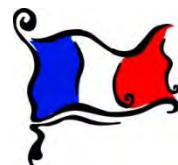


*Traditional Mono
block single colour
planting*

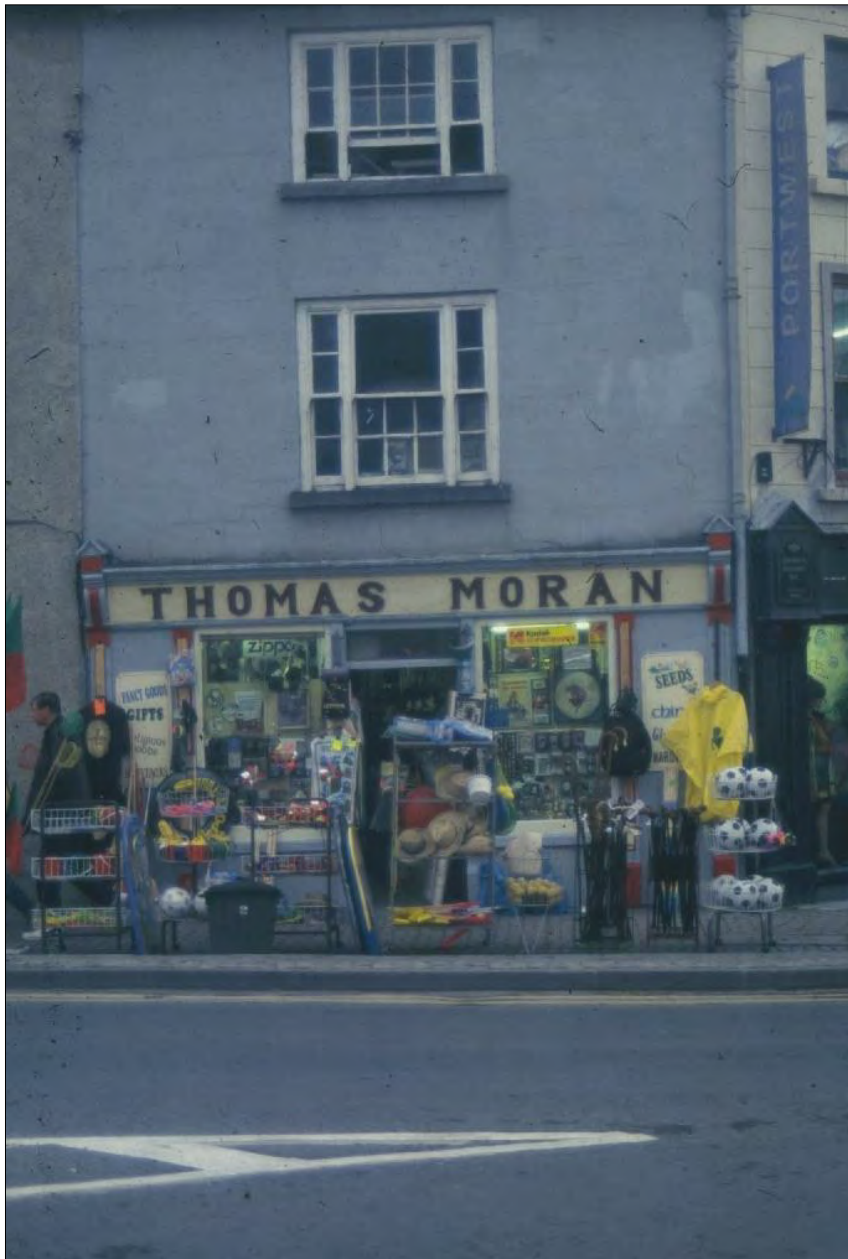




Bienvenue à Westport !



Colour Schemes - Conditions of Grant



Before



After



Conservation of
Existing
Shop Fronts

Removal of
casement
uPvc Windows

Re-Instillation of
Timber Sliding
Sash Windows



Re-instillation of Timber Sliding Sash Windows



New Build Infill



New uses for old

A Multi Generational Smarter Travel Community



An urban alternative
to the single dwelling
Cedar Park





Urban intensification – Altamont Street



Tubber Hill – Masterplan
Architect - Noelle Angley



600m from the Octagon

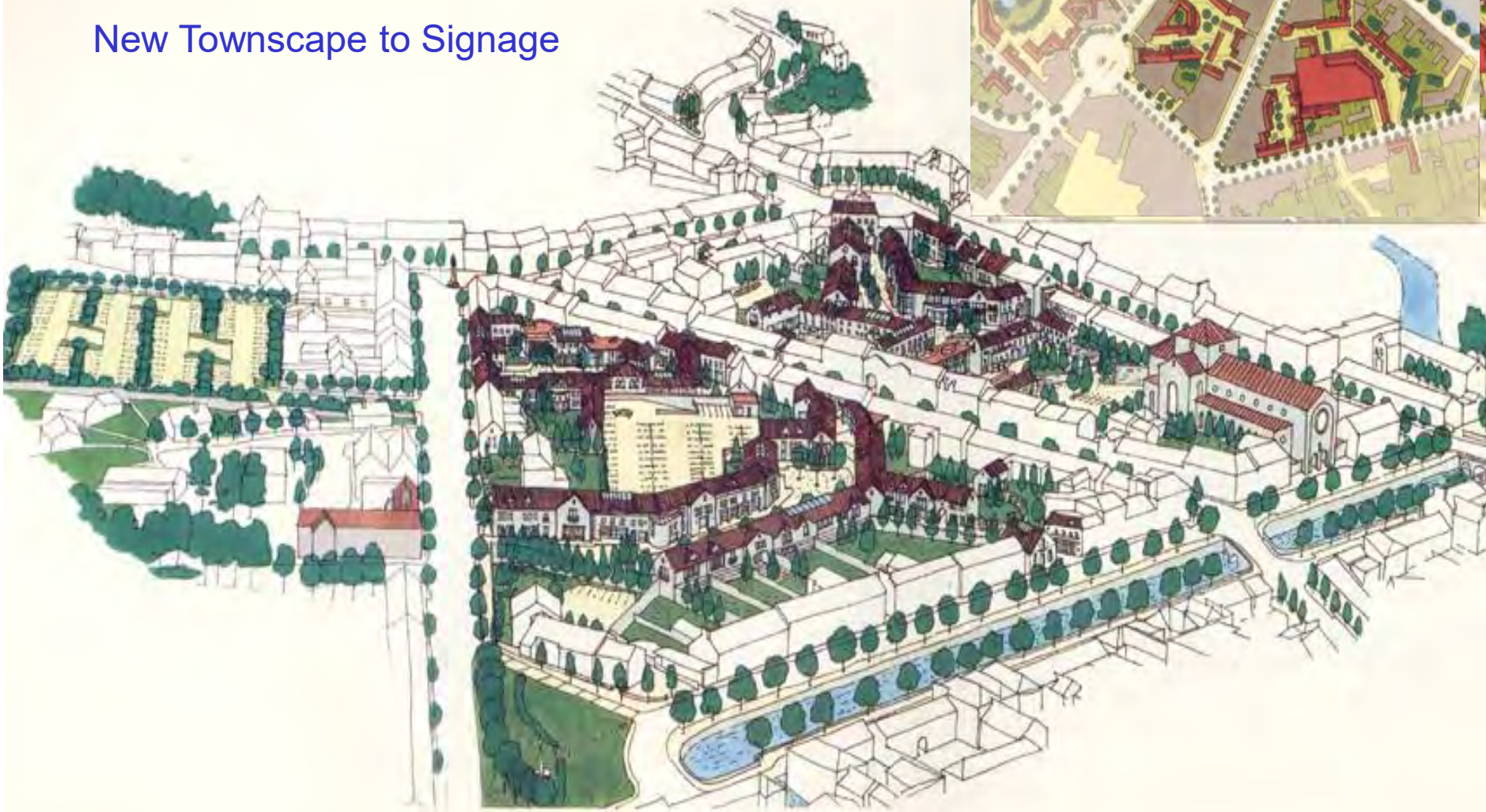


Housing, Primary-care (MCOH), Playground, Greenway, liveable, walkable, Community

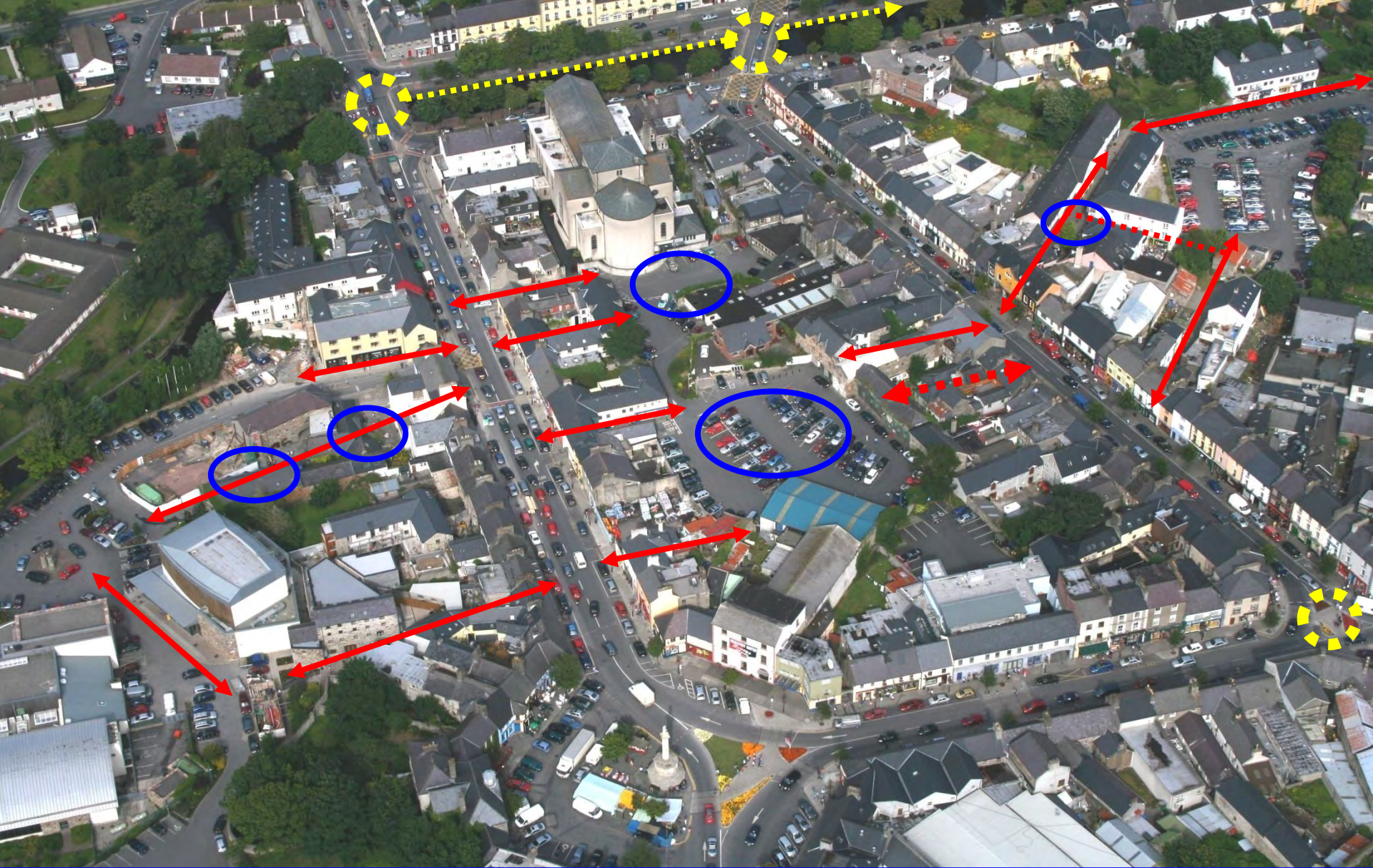
Marking the Millennium Westport 2000

Town Design Statement large to small:

New Townscape to Signage



Solutions to Problems: Town Design Statement



Releasing Landlocked Brownfield Sites
New Pedestrian Streets & Courtyards



Pedestrian Permeability Programme
New civic sub spaces



Before



During
5% Design 95% Consultation



After



After



Public Realm
Bridge Street , Case Study, 2004

Premier Shopping St.
Pedestrian Friendly?
Traffic Friendly?



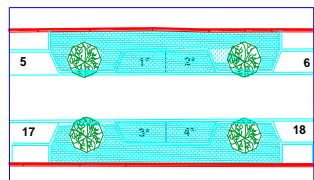
Immediate Transformation

No Vehicles, Spill out from shops/cafes cappuccino etc
softening of streetscape (pipes on pallets)

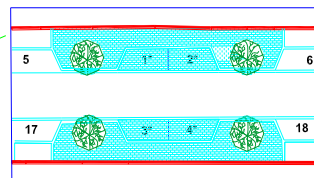


But... 1 hr Traffic jams on approach roads !

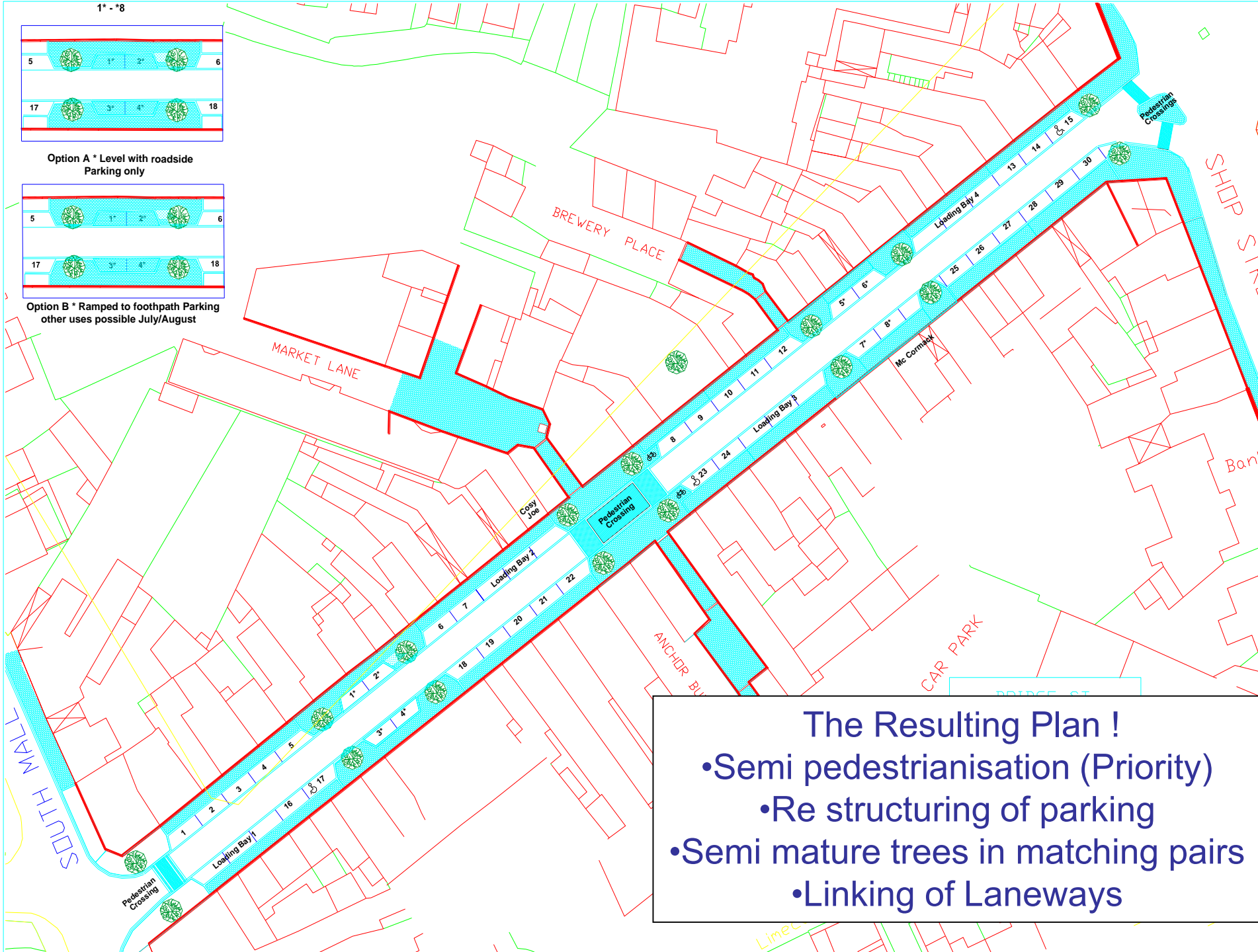
1" = 8'



Option A * Level with roadside Parking only



Option B * Ramped to footpath Parking other uses possible July/August



The Resulting Plan !

- Semi pedestrianisation (Priority)
- Re structuring of parking
- Semi mature trees in matching pairs
- Linking of Laneways

Bridge Street Complete Car Space becomes Social Space





Space needed for car with one person





The Octagon 19th Century



The Octagon 20th Century



The Octagon 21st Century

Westport a series of horizontal teams



Council Executive
create vertical single
task driven teams to
achieve specific goals
Inc. Civic Projects

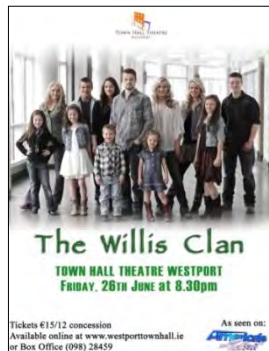


Delivery of
New Theatre



€3 M Community Project

225 seat Theatre



+



+



+



=



Town Centre Theatre = People + Activity = Spin off commercial spend in town core makes town more desirable, liveable, lovable and viable as a successful entity.



Town Hall

A Community Investment Company



Town Architect – in essence is a **Community Architect**
Key long term, town management roll in coordinating
the built environment and delivering for Westport.



NATIONAL TIDY TOWNS CONFERENCE 2017

WESTPORT CO. MAYO

FRIDAY 24th & SATURDAY 25th MARCH



With Architect
Dermot Bannon





Events: Making Westport Irelands outdoor Adventure Capital





The Takeover RTE2: 9.30pm

Media



RTE



Develop a strong relationship with the media!



WESTPORT TOWN COUNCIL

PUBLIC ART SCULPTURE COMMISSION WESTPORT CO. MAYO

Westport Town Council invites artists to develop proposals for a new permanent sculptural commission to celebrate Westport winning The Irish Times award of "Best Place to Live in Ireland" Budget 53,000 euro

Full briefing document available via:
www.etenders.gov.ie ID number 72109 or
www.mayococo.ie under Arts Service in Public Art News and Events, or Arts News sections

or contact: Gaynor Seville, Public Art Co-ordinator,
Mayo County Council
email: gseville@mayococo.ie, Tel: 094 904 7561

This is a one stage open competition process
Site Visit Friday 8th March
Closing date for all applications is Monday 8th April 2013

WESTPORT

The Best Place to Live in Ireland

THE IRISH TIMES



RONAN HALPIN

Celebrating Westport

as

THE IRISH TIMES

Best Place to Live in Ireland

Westport Town Council

Heritage Town Initiative 2013

THE IRISH TIMES



Frank Mc Donald

Environment Editor



Aidan Dunne

Visual Arts Critic



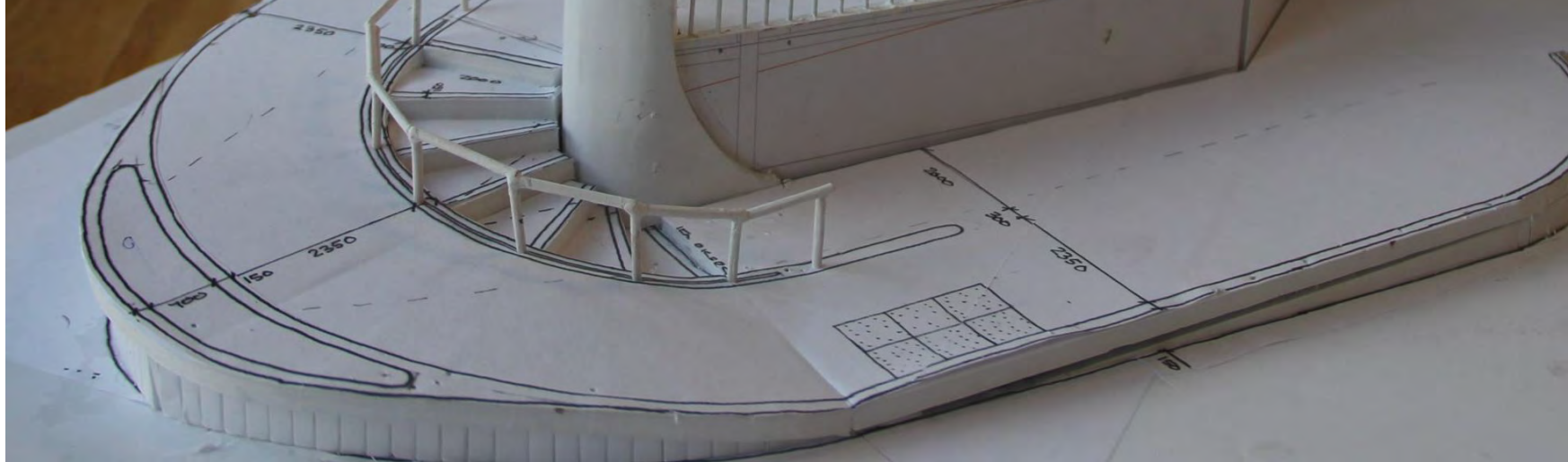
Rona Halpin

Artist

1% for Art



'SENTINEL'



THE IRISH TIMES

Voted Irelands Favourite
Piece of Architecture 2016

Royal Institute of Architects of Ireland



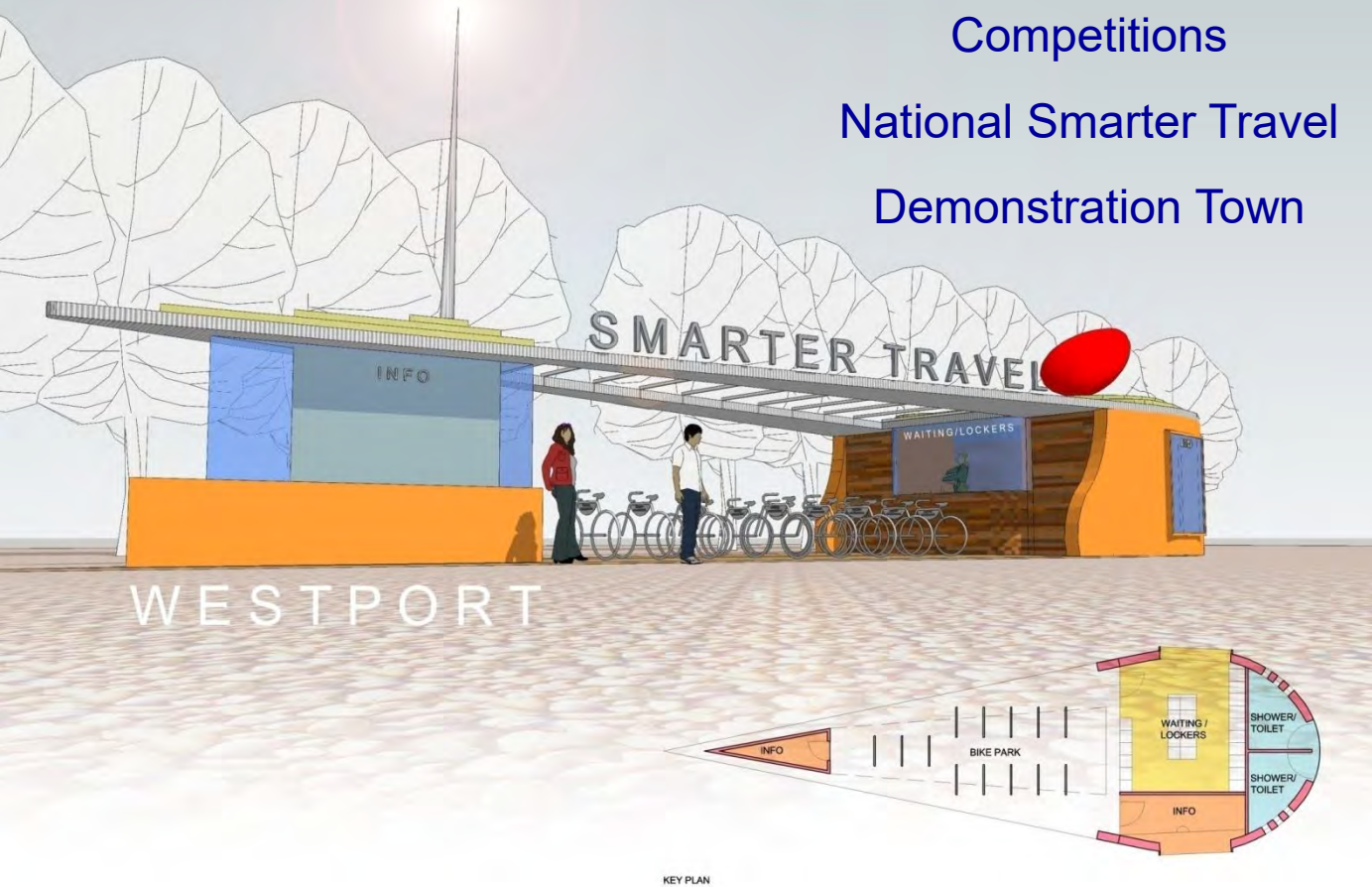
Westport is one of Irelands most successful multi award winning towns.
3 - National Tidy Towns wins in one decade – Culminating Irish Times Award
This was not always the case, over the past 2 decades it has extensively reinvented and rejuvenated itself as a strong economic base and tourism destination.



Competitions

National Smarter Travel

Demonstration Town

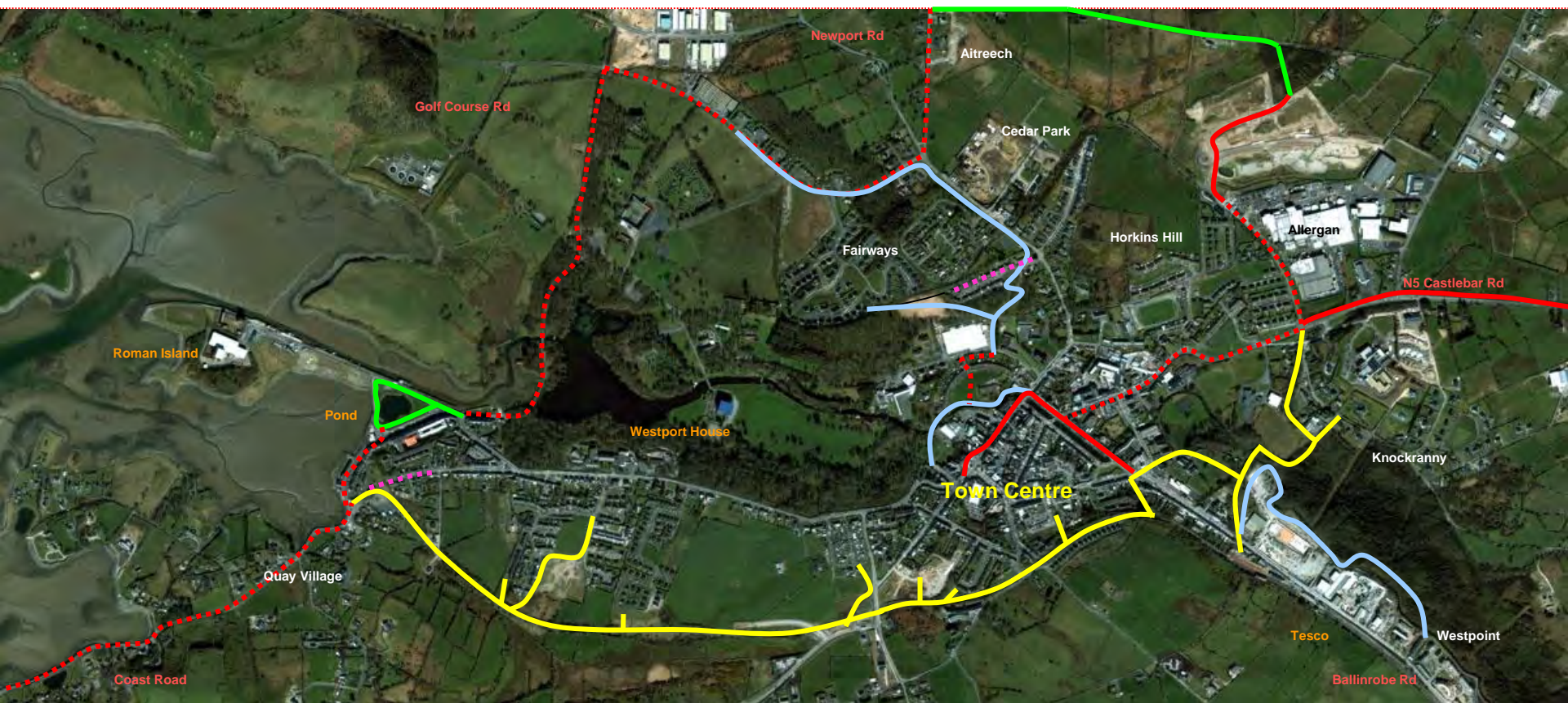


KEY PLAN

€5 m Infrastructural & Hearts & Minds Campaign.



WESTPORT TOWN - SUSTAINABLE TRAVEL DESIRE LINES



Legend

— Quay Greenway
(Approved Funding)

— Northern Greenway

..... On Road Cycle way

— On Rd Separated
Cycle way

— Short Cut Routes

..... Home Zones



*Smarter Travel
Westport Green-Way*



Bike Buffet

- 10 Buffets throughout the year
- Up to 100 cyclists
- Broad Age Profile
- Families
- Locals and Visitors



CULTURE NIGHT

WESTPORT SMARTER TRAVEL

Bike Buffet

Friday 19th September, 6.00pm

Join in this Bike Buffet with a twist!

Meet at the Westport Coast Hotel at 6 pm for some delicious mocktails followed by a trip to the Custom House Studios to see the Clew Bay Pipe Band and take in the artists exhibitions and workshops. From there we'll pedal on through the grounds of the stunning Westport House for some gourmet pizza at Gracy's Cafe Bar followed by a guided tour of Westport House. Hop back on the bikes to the Clew Bay Hotel for some top notch desserts and relax while viewing Cycling Memories 'The Movie'.

Cost: €10

Meeting point: Westport Coast Hotel

Buy your ticket at Westport Leisure Park or by calling 098 29160 by Wednesday September 17th.

Bring your bike, helmet, hi-vis, lights, a hungry belly and your cycling legs!

www.westportsmartertravel.ie

Like us on 



Smarter Travel Work places



3. Junction Treatment & Traffic Management



Smarter Travel Bike Stands



Smarter Travel Public Realm Works at Westport Quay 2014



Smarter Travel Public Realm Works at Westport Quay 2014



Smarter Travel Public Realm Works at Westport Quay 2014



Smarter Travel Public Realm Works at Westport Quay 2014



Smarter Travel Public Realm Works at Westport Quay 2014
The start of rekindling its relationship with the Ocean.



The Browne Family -
Westport House
Irish Tourism Pioneers
Celebrating 50+ Years of Welcoming







Westport House
Completing The Story
1530 - 2013



Partners
Gráinne & Elizabeth I



Sheelyn & Westport House New Town Gates
Partnership is just as relevant today!



New Gates

A large group of people is walking along a path in a park. The path is on the left side of the image, and the people are walking away from the camera. The park has green grass and many trees with autumn foliage in shades of yellow, orange, and brown. In the background, there is a large, multi-story building with a grey roof and many windows. The sky is a pale blue.

Thank You!

A town must have a strong collective consciousness to develop coherently
and must set goals for its future.