



Oifig an
Rialaitheora Pleanála
Office of the
Planning Regulator

Public Rights of Way and Local Authority Development Plans

Case Study Paper 01

12th November 2021

Kenneth Moloney, Senior Planner

Statutory Context for OPR Reviews/Complaints Function

- ▶ Statutory contexts...
 - ▶ S. 31AS of the Act
 - ▶ S. 31AT (Minister forms an opinion re PA performance)
 - ▶ S. 31 AU (complaint by any person to OPR or via Minister)
- ▶ OPR Context
 - ▶ Legislative functions (S. 31P (1) (i) & S. 31P (1) (f))



Correspondence to the Office



- ▶ Development Plan consistency
- ▶ Local amenity value of tracks / trails
- ▶ Healthy living
- ▶ Covid-19 pandemic
- ▶ Access

PROW Legislative Provisions



Section 10 (2) (o) of the Planning & Development Act, 2000 (as amended)

Mandatory DP objective
Preservation of PROW
access to seashore,
mountain, lakeshore,
river bank – map / list



Section 14 of the Planning & Development Act, 2000 (as amended)

Provision of PROW



Section 206 (creation of PROW pursuant to agreement)



Section 207 (compulsory powers for creation of PROW)

Project Methodology (desk top review) –Part 1

NWRA

Development Plan	DP reference to PROW's	Policy Objective for Protection / Preservation	Recorded PROW's on Map	Recorded PROW's in list form	DP objective to ID PROW's during life of Plan
Cavan	✓	✓	✓	✓	✓
Donegal	✓	✓	✓	✓	
Galway City	✓				
Galway County	✓	✓			✓
Leitrim	✓	✓			✓
Mayo	✓	✓			✓
Monaghan	✓	✓			✓
Roscommon	✓	✓	✓	✓	✓
Sligo	✓	✓	✓	✓	✓

The illustration shows a light gray document window with three colored window control buttons (red, green, and gray) in the top-left corner. The title 'Review Part 1' is written in a bold, dark blue font. Below the title are four horizontal gray bars of varying lengths, representing text lines. A magnifying glass with a dark blue frame and a black handle is positioned over the lower-left portion of the document. The background of the slide features abstract blue geometric shapes on the right and bottom edges.

Review Part 1

All (35) development plans make reference to PROW's

32 DP's identify policy objectives for protection / preservation of PROW's

11 DP's have PROW's have inventory & recorded on maps

22 DP's (including 11 above) have objectives to identify PROW's during life time of plan

10 plans had no inventory or map of PROW's, nor an objective to identify any PROW's during the life time of the plan

An illustration of a document window with a magnifying glass. The window has a title bar with three colored circles (red, green, grey) and a title "Review Part 2". Below the title are four horizontal lines of varying lengths. A magnifying glass with a blue frame and a black handle is positioned over the lower part of the document.

Review Part 2

Key issues identified in implementation of S.
10(2)(o)

Section 15 Progress Report

City / County Development Plan review

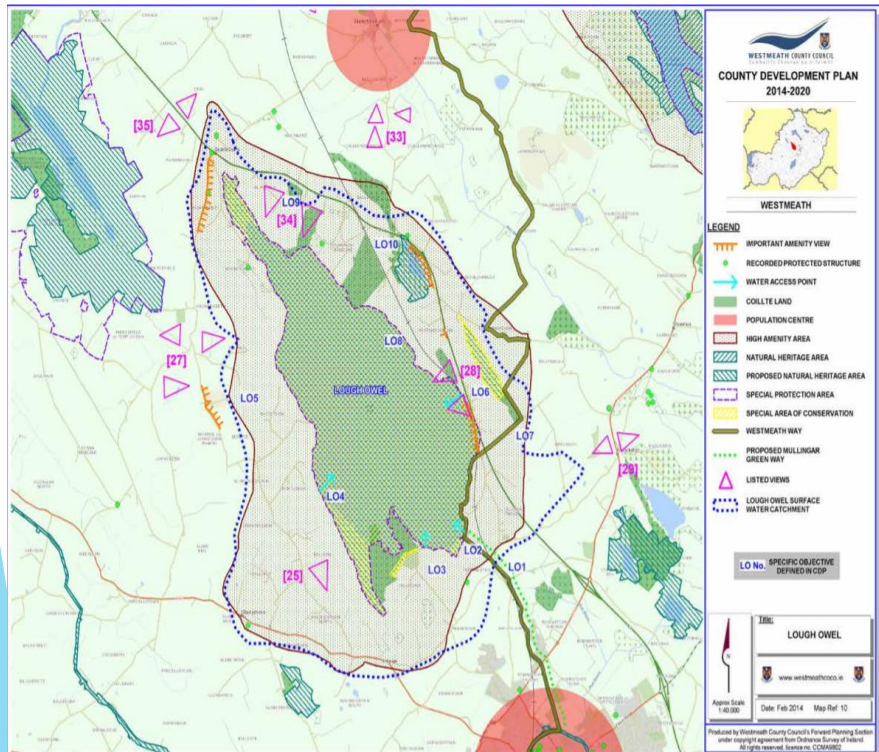
Refinements / comments

Conclusions



- ▶ A variety of approaches
- ▶ Public Rights of Way
 - ▶ Maps / lists
- ▶ Non statutory walks / ways
 - ▶ Permissive Access
 - ▶ Greenways
 - ▶ Coillte

Good Practice



- ▶ Seashore, riverbanks, lakeshore, mountains & uplands
- ▶ Access from Mullingar to Lough Owel on PROW
- ▶ Combined with
 - ▶ Westmeath Way
 - ▶ Proposed Westmeath Greenway



PROW 4
Public right of way
number 4 at Enniscrone

— Public right of way
to be preserved



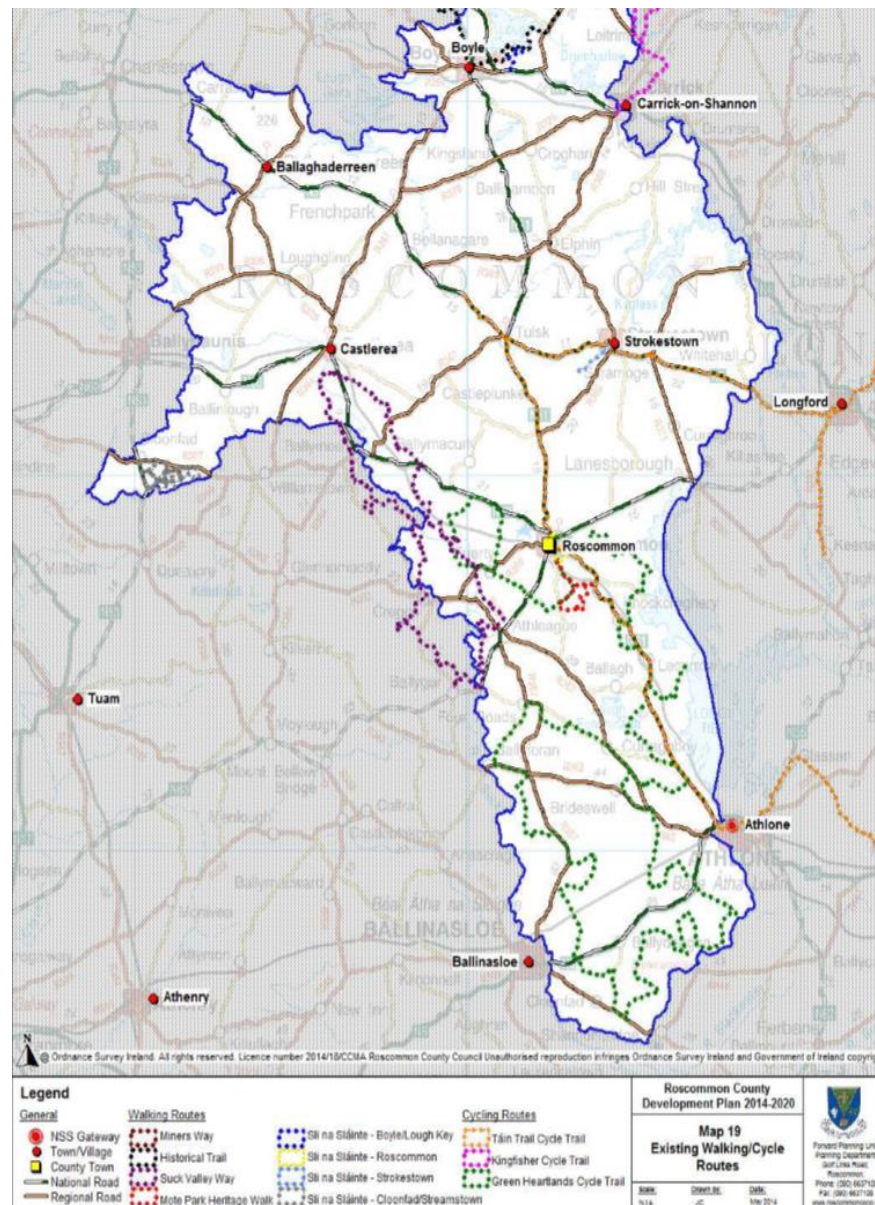
Notes:

Details shown on this map are for information purposes only. Further details on any item should be clarified with Sligo County Council.

This map has been produced by Sligo County Council with available Local Authority and Ordnance Survey Ireland base data.

It is important to note that this is not an exhaustive list and that the omission of a Right of Way from this list shall not be taken as an indication that such a Right of Way is not a Public Right of Way.

© Ordnance Survey Ireland. All rights reserved.
Licence number 2010/20 CCMA/ Sligo County Council



Good Practice

**Establish
an
inventory**



**Work with
wider
government
bodies**



**Map amenity
routes –
including cross
boundary**



**Researching
legal right of
ways**



CSP Conclusions

**Variety
outcomes**

**Local authorities
followed best
approach – better
outcomes**

**Evaluate and
assesse County
Development Plans**

www.myplan.ie

**Further focussed
engagement**

Thanks for listening...